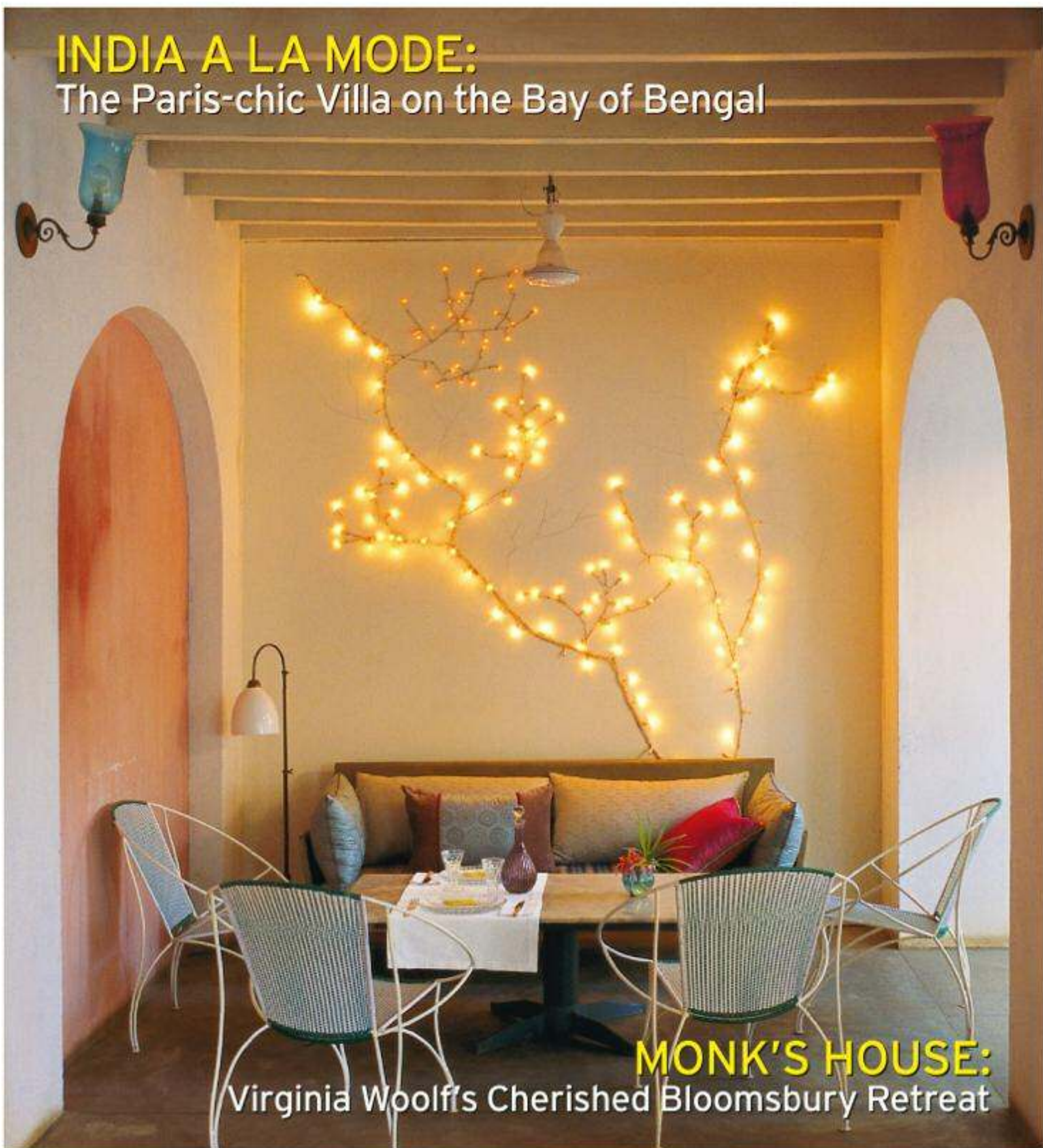


JUNE 2012 £4.70

THE WORLD OF INTERIORS

INDIA A LA MODE:

The Paris-chic Villa on the Bay of Bengal



MONK'S HOUSE:

Virginia Woolf's Cherished Bloomsbury Retreat

inspiration

Some of the design effects in this issue, recreated by Maria Yiannikou



1 For fittings like those at Agathe Guerin's Pondicherry shop, try Chloe Alberry. Antique Hundi lamps like those hanging outside the entrance (page 130) start at £290 approx each. It also has cut-glass door-handle bars, as seen inside the shop, which cost £15 each. Ring 020 7727 0707, or visit chloealberry.com.



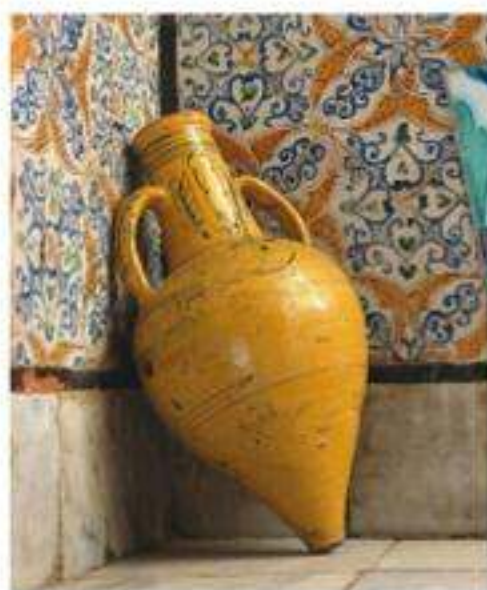
2 Does the ship suspended from Agathe Guerin's ceiling float your boat (page 132)? Then you're sure to be interested in Polish designer Pawel Grunert's limited-edition 'SIE43' chair. It is made from stainless steel and plastic bottles, and costs £1,240 approx. Ring 00 48 604 119 599, or visit grunert.art.pl.



3 If you're seeking blinds similar to those gracing La Maison Rose's façade (page 130), roll up. Joss Graham's bamboo 'Chik' blinds, made by craftsmen in Delhi, come in three designs ('Gilas' is shown here) and any colour string your heart desires. They cost £7.80 per sq ft. Ring 020 7730 4370, or visit jossgraham.com.



4 Replicate the illuminated-tree effect at La Maison Rose's restaurant (page 131) with this delectable 'Willow' garland light. It is two metres long and costs \$44. Ring 001 706 865 1244, or visit heartsandflowersprimitives.com.



5 The Nabeul pottery in our article is displayed at an Ottoman palace in Tunis against a backdrop of Italian ceramic tiles (page 174). Solar Antiques has similar reproductions wall to wall. They cost from \$48 each. Ring 001 212 755 2403, or visit solarantiquetiles.com.



6 Can't contain your excitement over the Or-estiadi Foundation of Sicily's collection of Nabeul ceramics (page 174)? Robert Kime's yellow-and-green Nile ware will also send you potty. The colours symbolise sand and the celebrated river. Prices start from £12 for a small soufflé dish. Ring 020 7229 0886, or visit robertkime.com.



7 Christopher Farr's collection of five Omega Workshop rugs is based on original designs from the Woolfs' circle of friends (page 156). Its handmade Anatolian wool-and-mohair '953' rug costs £9,400. Ring 020 7349 0888, or visit christopherfarr.com. For hand-painted furniture, fabrics and lamps, go to Bloomsbury Interiors. This 'Leaf' coolie shade costs £79 and the base £80. Ring 01273 709055, or visit bloomsbury-interiors.co.uk.



8 Keen on the brick floor at Monk's House (page 156)? Then hotfoot it over to Fired Earth. The company's 'Lubelska' terracotta brick tile costs £149.76 per sq m. Ring 0845 293 8798, or visit firedearth.com.



9 Green-painted chairs like the ones in the Woolfs' kitchen (page 160) can be had from Tobias and the Angel, which offers simple Gustavian-style ones (£330), as well as the more decorative 'Onion Back' version shown here (£354). Ring 020 8878 8902, or visit tobiasandtheangel.com.



10 Envious of Virginia Woolf's favourite shade of green (page 156)? Go to Francesca's Paints – she can mix the hue by hand. Her lime-wash costs from £20.59 per litre. Ring 020 7228 7694, or visit francescaspaint.com.

11 Virginia Woolf commissioned several pieces from Duncan Grant, such as the dining chairs (page 159). Though he died in 1978, his textile designs are still available. These 'West Wind' and 'Grapes' linen/cotton mixes, among other designs, can be found at the Charleston Shop, and cost £55 per m. Ring 01323 811626, or visit charleston.org.uk.

12 For those pining after an 18th-century Windsor chair from our featured exhibition (page 120), the next best thing is one made today by Stewart Linford. Stewart is the only cabinetmaker handcrafting traditional designs in High Wycombe, Bucks, the original seat of the classic. His 'Eton' rocker costs £2,500. Ring 01494 537957, or visit stewartlinford.com.

